



WorkSpace and Active Intelligence

WorkSpace™ provides users with a single interface to all aspects of the OneOffice application suite.

Active Intelligence™ identifies and delivers to users information held in OneOffice 3000 and elsewhere based on the nature of the tasks each user is working on.

Key Features at a Glance

- A single user interface to all aspects of OneOffice 3000
- Intuitive, flexible use of screen real estate
- Fast easy access to information and records
- Provides additional information customised to the role of each user
- Unique Active Intelligence capability

WorkSpace and Active Intelligence are part of OneOffice 3000, a single application combining sales, manufacturing, order processing, stock management, customer care and finance.

Active Intelligence™ (patent pending) is a unique capability that monitors business processes along with user activity and delivers information to users at the moment when it is of value to them.

can be managed through OneOffice 3000 simplifies training, improves efficiency and reduces the cost of managing multiple systems.

The facilities within WorkSpace include:

- A single window providing access to all the OneOffice 3000 programs
- Designed to optimise user ergonomics with an intuitive and flexible use of screen real estate, plus quick direct access to information and records.
- 'Explorer' style menu system ensures that any OneOffice 3000 program is only a few clicks away.

Benefits

- Active Intelligence offers improved productivity by presenting users with additional relevant information in ensuring that you can get the most out of every opportunity
- WorkSpace is both intuitive and easy of use reducing training costs and improving effectiveness
- Single system approach avoids the cost and risks of integrating several disparate systems.
- Dashboards are straightforward to build and customise

WorkSpace

Using this single common desktop across the full range of business processes that

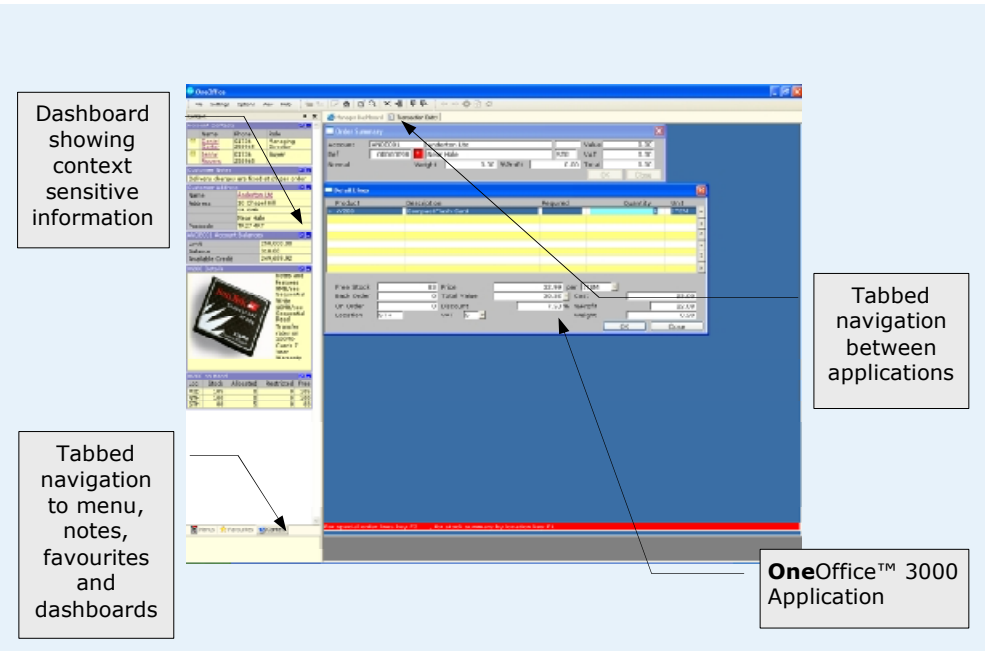


Figure 1. WorkSpace provides a straightforward and intuitive way for people to navigate and use OneOffice 3000. Active Intelligence helps users make the most out of every opportunity.



- User customisable 'Favourites' Menu for fast access to commonly used programs.
- Simple tabbed windows for quick navigation between active OneOffice 3000 programs.
- An embedded web browser to display information delivered via intranet and Internet
- WorkSpace panes can 'auto-hide' or be 'pinned' in place and resized at will enabling users to select the optimal configuration of available screen space for their needs
- Extensible architecture to support the introduction of new features into WorkSpace.

Active Intelligence

Active Intelligence is a patent pending technology which replaces the traditional rigid procedural approach used in business software of passively capturing and storing data with a new approach that ensures users see the information they require to make timely and informed decisions, just when they need it.

Active Intelligence uses a component called a Contextual Co-Processor to determine the nature of the tasks each user is currently working on and then to assist them by providing additional, relevant and timely information. For example, if a user is working on Product X and Customer Y, then the Contextual Co-Processor can identify and deliver additional information to the user for that

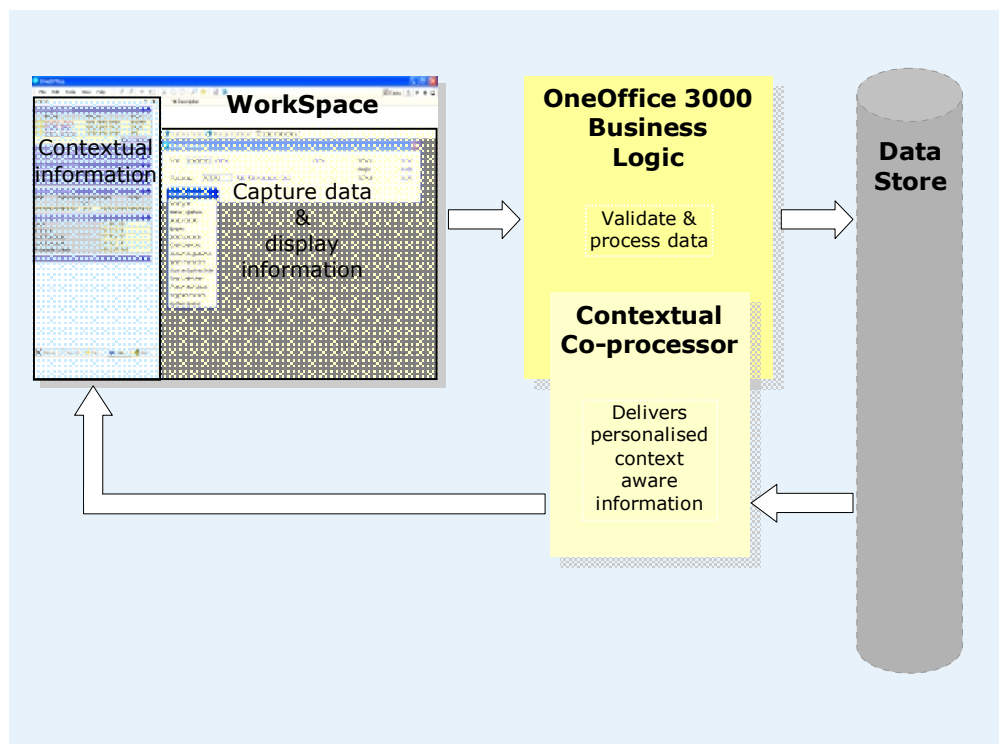


Figure 2. Active Intelligence— the Contextual Co-Processor monitors and interprets the tasks a user is working on and displays additional, relevant information to help them make well informed and timely decisions.



Customer/Product combination; the user can also elect to see other apparently unrelated but relevant information.

This straightforward, flexible approach ensures that users have the information they need to make well informed decisions just when they need it. This reduces the learning curve for new starters while maximising efficiency, customer satisfaction and most importantly revenue.

Unified WorkSpace

This unique approach to displaying and managing information across all your business processes delivers a number of

important benefits including:

- presenting everything your users need to know in a single, easy to use, interface
- providing information so you can deliver better customer service and maximise selling opportunities
- avoiding the cost, risk and delay of integrating several disparate systems
- reducing training costs and gaining from greater employee satisfaction
- achieving 360° visibility across your business leading to increased productivity and profitability

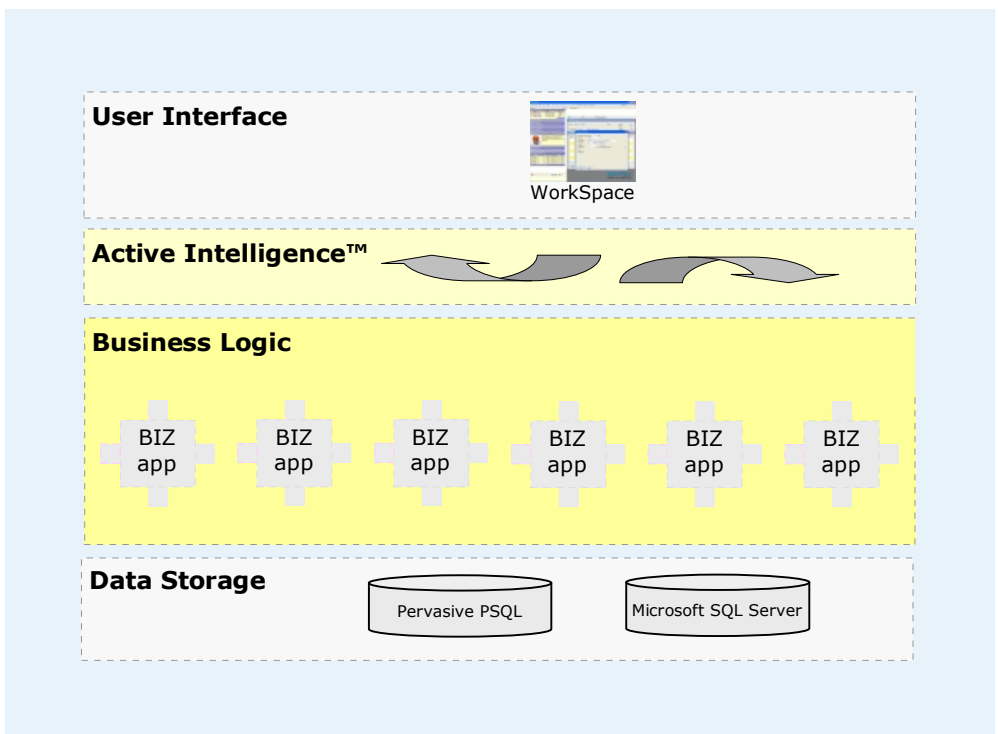


Figure 3. OneOffice Schematic—Multi-Tier Architecture. OneOffice is a component based software application enabling organisations to select and evolve the best system to suit their needs.



**For more information, visit www.OneOffice3000.com
or call us on +44 (0)1628 551345**



Regatta Place, Marlow Road, Bourne End, Buckinghamshire SL8 5TD. United Kingdom
T: +44 (0)1628 532565 F: +44 (0)1628 551490 E: info@OneOffice3000.com

© Copyright 2004 TIS Software Limited. All rights reserved. All trademarks, trade names and logos referenced herein are the property of their respective owners. OneOffice and the OneOffice logo device are registered trademarks and Global Business Systems, the Global Business Systems globe logo device, OneOffice 3000 and 'know everything' are trademarks of TIS Software Limited. Global Business Systems reserves the right to change technical specifications without notice. E & OE

V1.2