



Intrastat

OneOffice 3000 Intrastat gathers details of invoiced deliveries from purchase ordering and sales ordering systems and uses them to produce a statistical report in the format required by HM Customs & Excise.

Key Features at a Glance

- Imports data from OneOffice 3000 or third party applications
- Transaction validated during posting
- Group or company reporting

Benefits

- Saves time expended on compiling declarations manually
- Saves cost of manual tracking and management

OneOffice 3000 Intrastats enable information to be imported automatically via standard interfaces with OneOffice 3000 Sales Order Processing and Purchase Order Processing and a number of third-party applications, or input manually if the module is used stand alone. Where information is imported, standard default values can be set up for products or customers for use where the sending system does not normally hold the required information. For example, you can specify a standard country of origin for a product, or a standard mode of despatch for a customer. Validation of accounts, products etc during posting can be enabled or disabled selectively.

Once posted, transactions can be selectively modified, added or deleted

until they have been included in a final SSD. There are facilities to print trial SSDs so that information can be reviewed and manually corrected before the final SSD is produced. A clear audit trail of final SSDs is maintained.

Reporting can be on a group or company by company basis, and the data retained for as many months as required. Where multi-company reporting is required, different sets of interface information can be defined including separate sets of defaults for each product/supplier/sending system combination. On-screen enquiry functions enable you to view journals posted to a specified account from a particular sending system or all journals involving a given product.

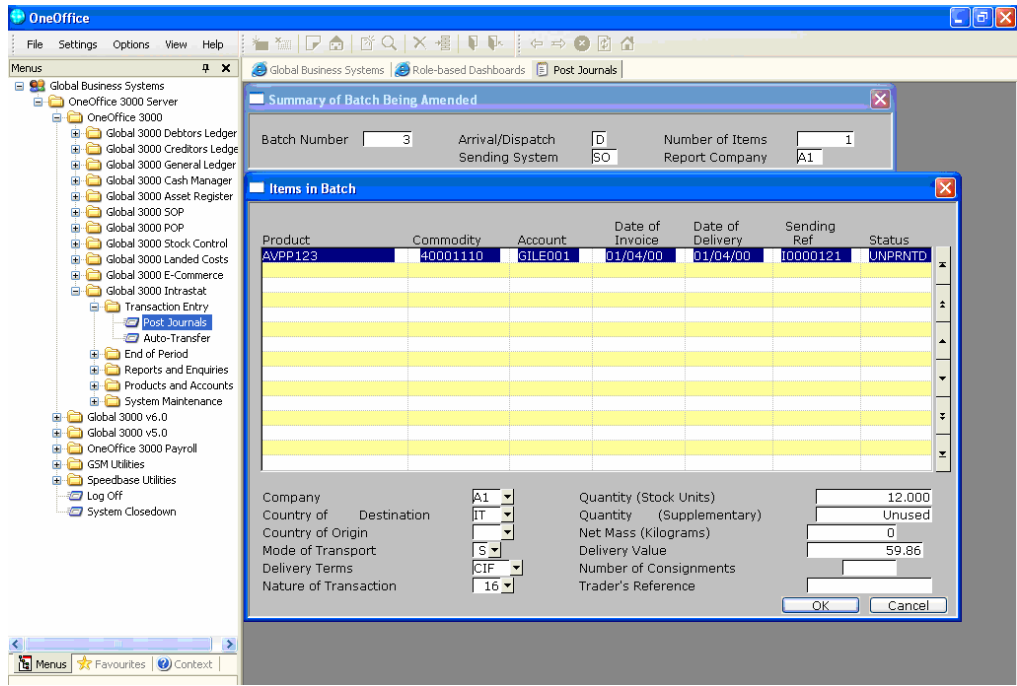


Figure 1. Transactions arrive from sending systems (in this case OneOffice 3000 Sales Order Processing) thereby eliminating the need to manually compile declarations.





Specification

Integration

OneOffice 3000 Intrastat can import data from:

- OneOffice 3000 Sales Order Processing
- Global 2000 Sales Order Processing
- OneOffice 3000 Purchase Order Processing
- Third party products via general purpose interface file

It can also be run stand alone.

Group/Company Reporting

OneOffice 3000 Intrastat can be configured to report on either a company by company or group basis. Where multiple company reporting is required, customer/supplier accounts and products and their corresponding defaults (e.g. default mode of arrival) can be defined on a company by company basis.

Postings

Transactions may be entered in batches either manually or automatically via one of the standard interfaces. In the latter case, information sent from the standard OneOffice 3000 distribution software is filtered to exclude domestic and overseas (non-EC) transactions. Transactions within a batch may be amended at any point prior to their appearing in a final SSD report.

The following batch header details are held:

- Title of up to 30 characters
- Report company (if group reporting is enabled, this is set to the group company ID)
- Arrival/despatch flag (indicates whether the transactions are sales or purchases)
- Sending system
- Status

The following details are held for each transaction:

- Product code
- Commodity code
- Account code
- Invoice date
- Delivery date
- Sending reference
- Status
- Company ID
- Country of consignment
- Country of origin (not currently mandatory for UK returns)
- Mode of transport
- Delivery terms
- Nature of transaction
- Quantity
- Supplementary units (if relevant)
- Net mass
- Delivery value (invoice value excluding tax but including related freight and insurance service charges where these form part of the invoice or contract price of the goods)
- Number of consignments
- Trader's reference

Product Details

Product details are defined on a (sending) system by system basis and include:

- Default commodity code
- Net mass (in kilograms per stock unit)
- Optional supplementary unit of measure, conversion factor and sense of conversion (multiply or divide)
- Standard arrival/despatch terms (if applicable)
- Standard nature of arrival/despatch (if applicable)
- Standard arrival/despatch EC country of consignment (if applicable)
- Standard mode of arrival (if applicable)
- Standard mode of despatch
- Country of origin (may be outside EC)



-
- Aggregate arrivals/despaches - separate flags to indicate whether aggregate arrivals/despaches of the product may be recorded in transaction entry. Where no default value is established for a product, the default for the customer/supplier is used. Where no default value exists for the customer/supplier, defaults defined at (sending) system level are used.

Validation

Validation of accounts, products and country of origin can be enabled or disabled, as can the facilities to record aggregates and trader-specific references. Where validation is enabled, entry of incorrect/unknown codes is not allowed for manual postings. Automatic posting permit incorrect/unknown codes but generate warning messages.

Reports

Data may be collected and reported on by individual company or consolidated for group reporting. The following reports are available:

- Trial SSD prints provisional copy of the next SSD report. Items listed remain available for amendment until the final SSD is printed
- Final SSD prints an SSD report for each month for which there are unprinted items.

Each report is numbered sequentially for audit trail purposes and items included are marked as printed to preclude further amendment Reports observe Customs & Excise limits as regards maximum items per report; however, reports are sequenced and can be printed as frequently as needed to cover the flow of Intrastat information.

Enquiries

Enquiry options include:

- Journals posted to a specified account from a specified sending system
- Journals posted for a specified product

All screen enquiries may be printed.



**For more information, visit www.OneOffice3000.com
or call us on +44 (0)1628 551345**



Regatta Place, Marlow Road, Bourne End, Buckinghamshire SL8 5TD. United Kingdom
T: +44 (0)1628 532565 F: +44 (0)1628 551490 E: info@OneOffice3000.com

© Copyright 2004 TIS Software Limited. All rights reserved. All trademarks, trade names and logos referenced herein are the property of their respective owners. OneOffice and the OneOffice logo device are registered trademarks and Global Business Systems, the Global Business Systems globe logo device, OneOffice 3000 and 'know everything' are trademarks of TIS Software Limited. Global Business Systems reserves the right to change technical specifications without notice. E & OE